

## Avatech Product Browser for Autodesk® Productstream™

Accelerate downstream decision making.

**Avatech's Product Browser works with Autodesk® Productstream™ to help accelerate downstream decision-making in the design-to-manufacturing process.**

Engineering has released its data downstream. Other departments now need to make quick and accurate decisions based on that data to help speed your product to market or maintain your production line. To achieve this, downstream stakeholders, from purchasing and field engineering

to the shop floor and customer support, need to slash time spent on cumbersome tasks and getting up to speed on product designs and maintenance drawings. Engineering personnel need to ensure that these stakeholders are aware of upcoming changes that may affect their decisions.

That's where Avatech's Product Browser comes in. Product Browser takes Autodesk's data management solution further by enabling downstream stakeholders to easily look up and visually navigate

### Where Does Product Browser work?

- Purchasing
- Manufacturing Shop Floor
- Production Control
- Field Engineering
- Engineering Change Management
- Customer Support

complex data, stay on top of pending processes—and even batch print documents. Using an intuitive desktop interface, your team can now address product design and maintenance issues more responsively—without needing engineering's help.

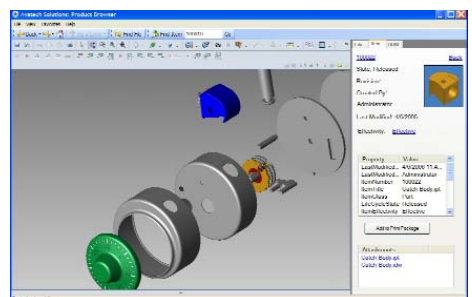
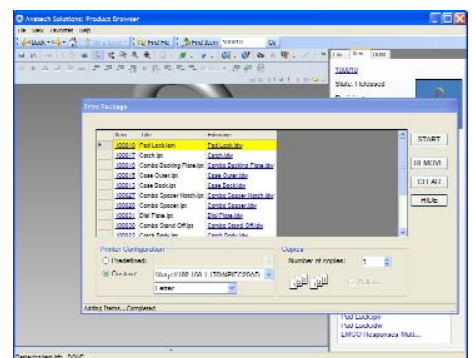
### User-Friendly Visibility For All Teams

Anyone who needs to see released or effective data during the release-to-manufacturing process—from design to production and beyond—can find what they need using the search and visual navigation tools. With Product Browser, you can quickly and easily:

- Retrieve and reference 2D design and maintenance drawings, 3D models, assembly animations or other associated documents by part number.
- Choose components visually within an assembly
- Alert users on items that are pending revisions

### Simple and Efficient

Product Browser's familiar browser interface is easy for users to learn and use—if they can use a web browser, they can use Product Browser. Simplified commands including batch printing whittles formerly time-consuming tasks down to the single click of a button.

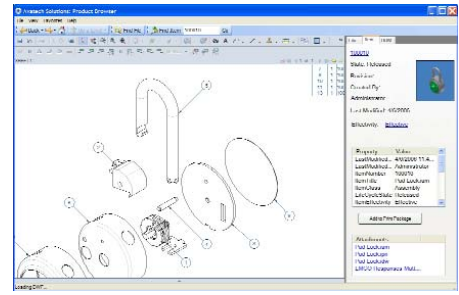


## Built On Autodesk's Foundation

Autodesk® Productstream™ software automates the release management process by managing engineering changes and bills of materials, while enabling the engineering department to maintain control over the design data. Your designs can be complete, accurate, approved, and released to manufacturing in a timely and effective manner. Product Browser extends this foundation allowing additional groups of users to leverage design data as never possible before.

## Data Management Experts At Your Side

Decades of experience gives Avatech Solutions the perspective required to understand data management issues thoroughly and implement practical solutions quickly. Drawing on our expertise in data management and process optimization, clients work with Avatech to achieve greater profitability and improved competitiveness. Our approach focuses on people, processes, and technology. We utilize a variety of enabling technologies and combine best practices to help our clients, reduce costs, improve quality, strengthen relationships with customers and suppliers, deliver more innovative products and services and minimize product time-to-market by leveraging the value of existing data.



## Avatech's Software Development Solutions Team

Our experts know that opening a box of software doesn't instantly help an organization meet its business objectives. Understanding the needs of a broad range of manufacturers by consulting with management, technical, and support teams, Avatech identifies and embeds practices and priorities into a new application.

## What Can We Do For You?

Visit [www.avatech.com](http://www.avatech.com), or call **800-706-1000** to get started with Product Browser, or to find out how our Data Management Team can assist you.



**AVATECH**  
SOLUTIONS®

Altogether Smarter Design.

**Product Browser**